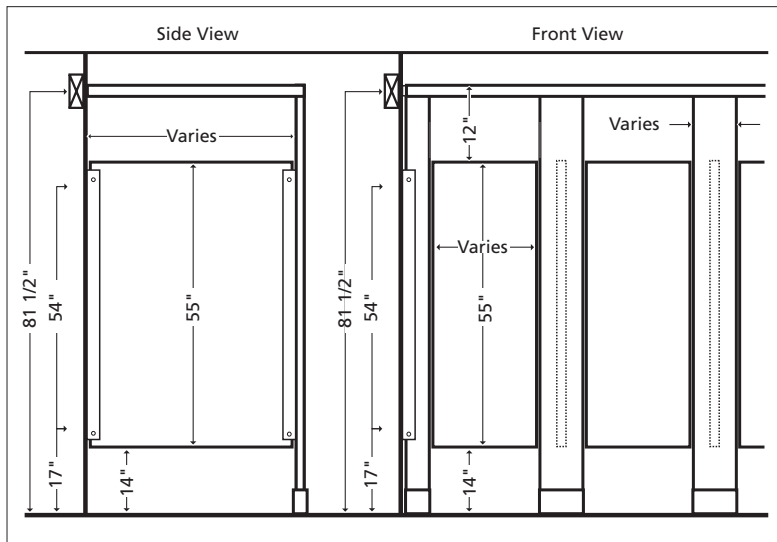


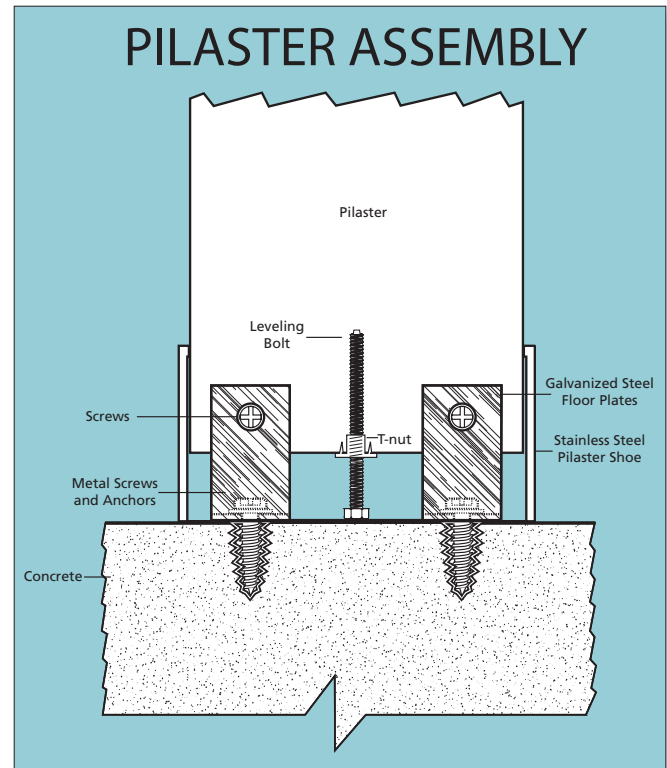
Elevations of Standard Layouts



Specifications:

Solid Plastic HDPE (Nova Series as manufactured by Atlanta Sunbelt Products)

All material will be solid polymer HDPE plastic thermally formed to make a solid sheet with homogenous color throughout. All edges will be machined with an edge radius of .125" above edges. Color to be selected from manufactures standard chart. For NOVA Series, all material (panels, doors, and pilasters) shall be 1" thick. Standard door hardware shall be aluminum with heavy duty wrap around hinges with latch and keeper. Coat hook and door pull shall be cast stainless steel. All wall brackets will be heavy duty continuous type (other brackets are available upon request). Pilaster shoes shall be 4" high minimum and polished to a # 304 finish. Aluminum anti grip head rail is standard with all overhead braced materials. Optional heat sink strip available on request at an additional cost.



Visit our web site for our complete product line of quality products

Commercial Washroom Restroom Compartments including:
 Plastic laminate *Quick Ship* compartments-*Sunlight* - in stock
 Plastic laminate "made to order" compartments-*Sunburst* - unlimited color availability
 Phenolic Core "made to order" compartments-*Eclipse* - unlimited color availability

ATLANTA SUNBELT PRODUCTS

Providing Our Customers the Best in Rest Room Partitions for 20 Years

P.O. Box 726 • Winder, Georgia 30680 • 770.868.1423 • FAX: 770.868.1325 • www.atlantasunbelt.com